

AI-ENABLING DATA ENGINEERING (AIDE)

An advanced AI integration solution that empowers DoD missions with scalable, secure infrastructure as code, leveraging innovative CI/CD pipelines to seamlessly integrate cutting-edge AI capabilities into operational environments.

OVERVIEW

Secure & Scalable Infrastructure for AI Deployment

AIDE provides the scaffolding to help DoD Components navigate common challenges in integrating AI technologies into their specific mission. Recognizing the potential game-changing capabilities inherent in the adoption of AI, this TRL-8 solution provides robust continuous integration / continuous delivery (CI/CD) pipelines to deliver secure, resilient infrastructure as code (IaC) on which AI capabilities depend. AIDE streamlines the integration of cutting-edge AI capabilities into operationally relevant environments.

AIDE's mission-focused approach and compatibility with DoD-authorized container technologies make it readily deployable at unclassified and classified levels, significantly reducing barriers to AI adoption and enhancing operational capabilities across the DoD.

Availability: AIDE is available to Government customers on the Tradewinds Solutions Marketplace. <http://www.tradewindai.com>
<https://www.tradewindai.com/marketplace/clwuoa1x30004mp0cs4zhzt3w>.



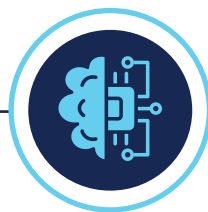
Data Flowing through the AI Management Platform

CORE COMPETENCIES



Mission Focused Approach

AIDE is specifically designed to address the unique complexities and constraints of AI data management within the DoD.



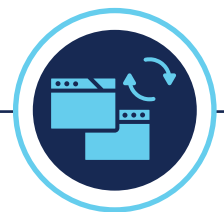
Comprehensive AI Data Management

AIDE provides end-to-end support for data discovery, transport, storage, enrichment, labeling, and standardization tailored to DoD needs.



Secure & Scalable Infrastructure

AIDE Delivers robust CI/CD pipelines and infrastructure as code, ensuring security and scalability for DoD environments.



DoD Compatible Deployment

AIDE is readily deployable using DoD-authorized container technologies at both unclassified and classified levels.

PROVEN OPERATIONAL IMPACT

BreakPoint Labs' AI-enabling Data Engineering (AIDE) solution delivers proven operational impact and enhanced cybersecurity capabilities for DoD missions. AIDE has demonstrated significant quantitative improvements in critical cybersecurity areas, such as:

- **Enhanced Cybersecurity Operations**

Demonstrated significant quantitative improvements in critical areas like threat detection time, data capture rates, and analyst productivity

- **Expanded Data Accessibility**

Provides scientists and researchers with access to previously limited data and exposes cyber data via API for research and analytics

- **Increased Operational Efficiency**

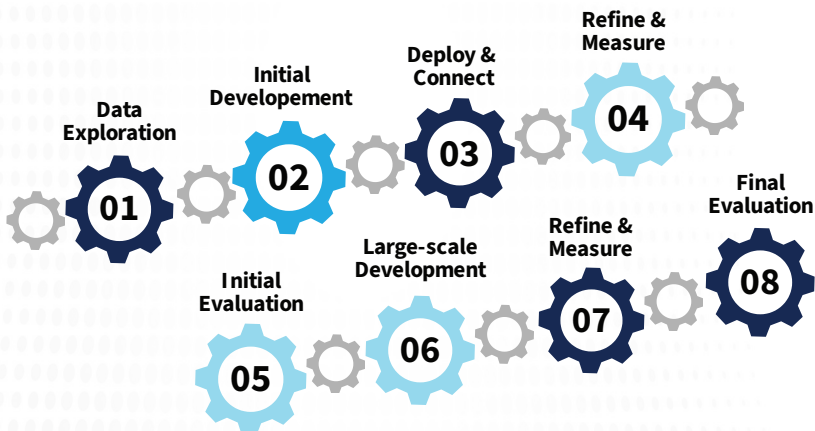
AIDE's workflow automation increases analyst productivity, reduces task response times, and streamlines workflows, saving thousands of work hours annually.

- **Improved Research Capabilities**

Increased research relevance and effectiveness through the use of 'real-world' datasets.


Big Data Engineering & Automation

Explore, Develop, Deploy, Evaluate, and Refine Advanced Cybersecurity Analytics



PAST PERFORMANCE

Joint Artificial Intelligence Center (JAIC) Test and Evaluation of Artificial Intelligence (AI)

 **CDAO** Under a Blanket Purchase Agreement (BPA) with the Department of Defense (DoD) Joint Artificial Intelligence Center (JAIC), BreakPoint Labs provides innovative solutions that enable the DoD to rapidly test and validate AI capabilities used throughout military operations and critical missions. Available to any DoD and Federal government client, BreakPoint Labs has provided data prepping, testing, planning, documentation, reporting, and use-case identification services for the spectrum of emerging AI technology like machine learning (ML), deep learning (DL), and neural networks (NN). Throughout the engagement, BreakPoint Labs has identified countless AI use cases within DoD production environments, rapidly piloted new solutions, and scaled the impact of AI across the DoD enterprise.

WHO WE SERVE

- Department of Defense (DoD)
- Civilian Agencies
- State & Local Governments
- Academic Institutions
- Commercial Enterprises

COMPANY INFORMATION

CAGE Code: **7FZP3**
SAM UEID: **WAU7C2EAKGN9**
Small Business

BUSINESS CERTIFICATIONS

ISO 9001:2015 Certified: **Cert #14812**
ISO 27001:2022 Certified: **Cert #20297**
CMMI Level 3: **CMMI SVC/ML3 Appraised**
(Appraisal #59678 | Exp Sep. 23, 2025)

NAICS CODES

- 541330** Engineering Services
- 541511** Custom Computer Programming Services
- 541512** Computer Systems Design Services
- 541513** Computer Facilities Management Services
- 541519** Other Computer Related Services (primary)
- 541715** Research and Development in the Physical, Engineering, and Life Sciences (except Nanotechnology and Biotechnology)

SIC CODES

- 7371** Custom Computer Programming Services
- 7373** Computer Integrated Systems Design
- 7379** Computer Related Services, Nec*
- 7376** Computer Facilities Management
- 7379** Computer Related Services, Nec* (primary)

HEADQUARTERS

8116 Arlington Blvd., #255
Falls Church, VA 22042
info@breakpoint-labs.com
844-HACKME2 (844) 422-5632
www.breakpoint-labs.com

CONTRACT VEHICLES

CDAO Tradewinds Solutions Marketplace:
www.tradewindai.com

GSA SCHEDULE: **Contract #GS-35F-248GA**
GSA Highly Adaptive Cybersecurity Services (HACS)

CONTACT US



Diana Orozco
Business Development Manager
(210) 216-6800
dorozco@breakpoint-labs.com



Denise Cole
Contracts Administrator
(703) 495-3559
dcole@breakpoint-labs.com